

Unit 1: Organization of the Body

1-4 Notes

Parts of the Cell (Organelles and their functions)

Nucleus –

Chromatin –

Chromosomes –

Plasma Membrane –

Cytoplasm –

Mitochondria –

Ribosomes –

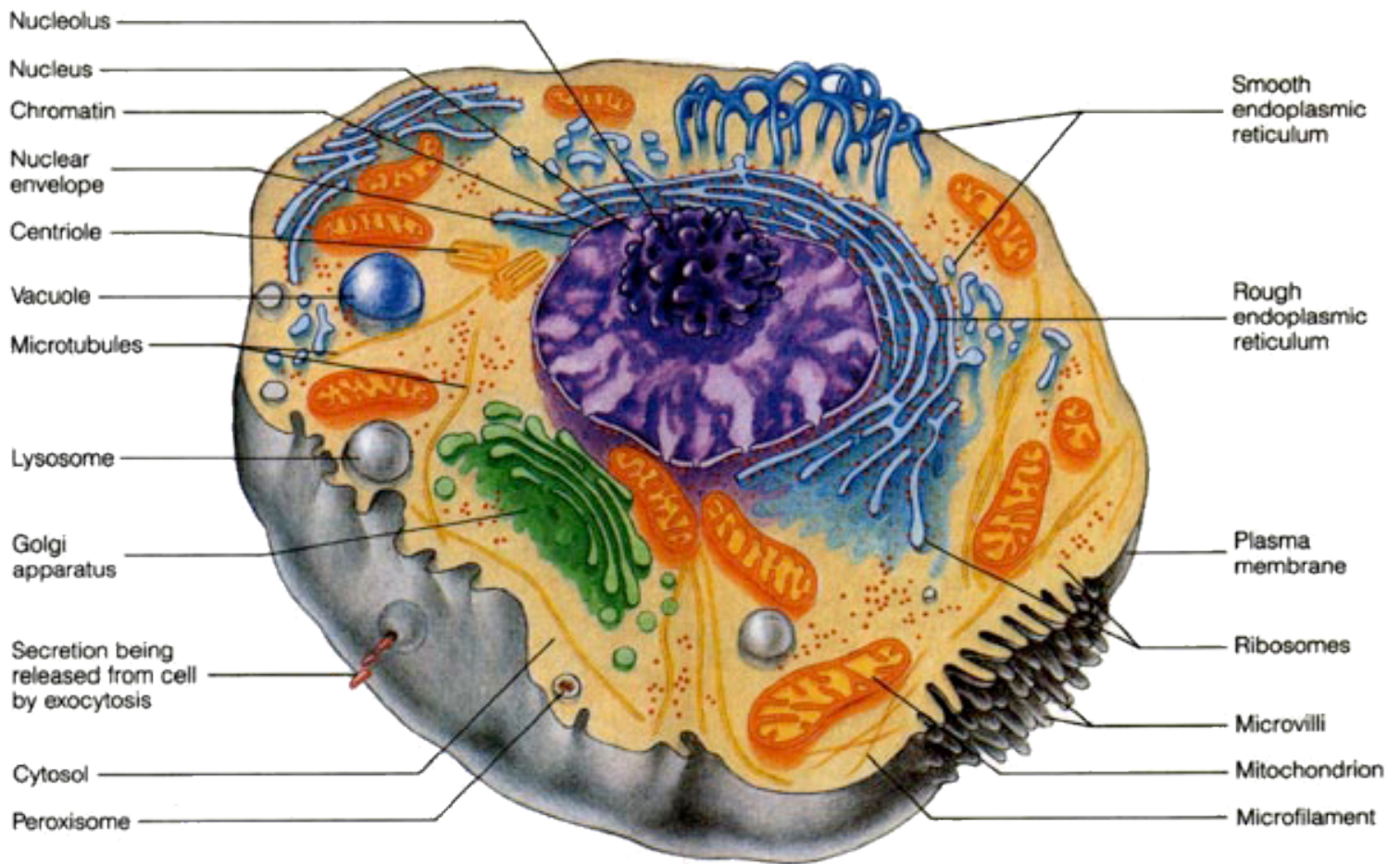
Endoplasmic Reticulum –

Golgi Body –

Lysosomes –

Cytoskeleton -

Vacuole –



Cytoplasmic Organelles

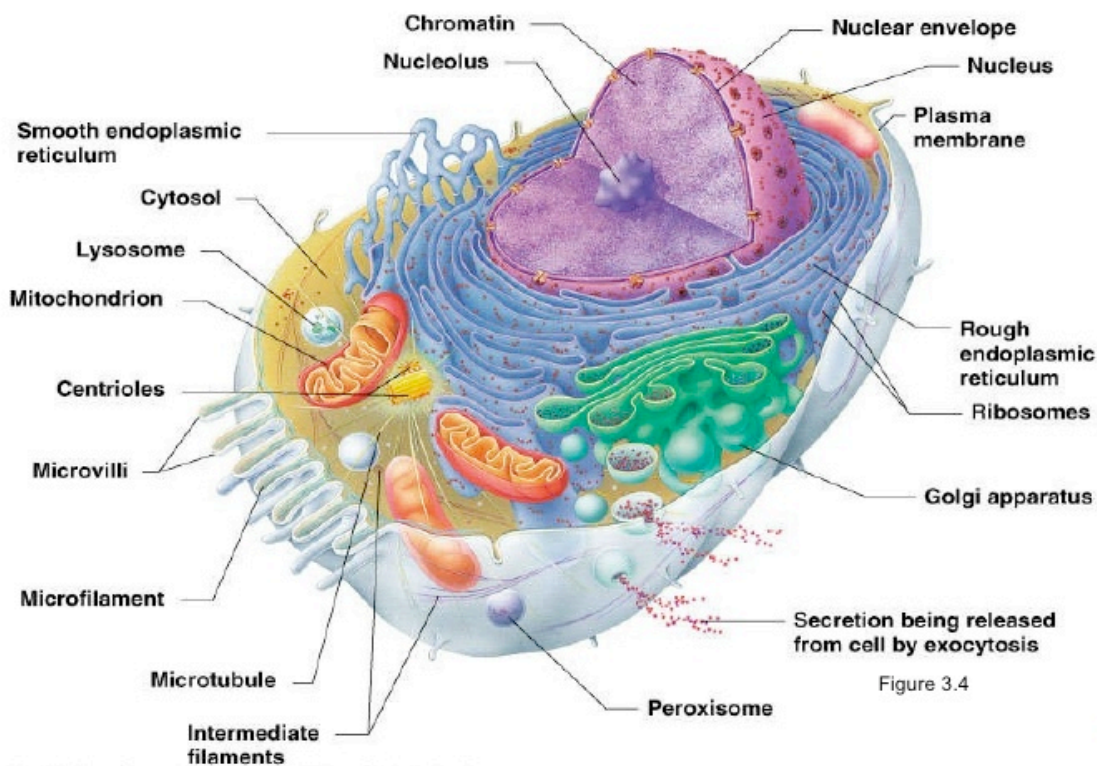


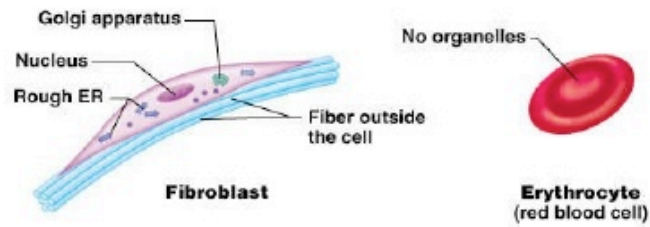
Figure 3.4

Types of Cells:

- a) cells that connect body parts
- b) cells that cover and line body organs
- c) cells that move organs and body parts
- d) cell that stores nutrients
- e) cell that fights disease
- f) cell that gathers information and controls body functions
- g) cell of reproduction

Cell Diversity

① Cells that connect body parts



② Cells that cover and line body organs

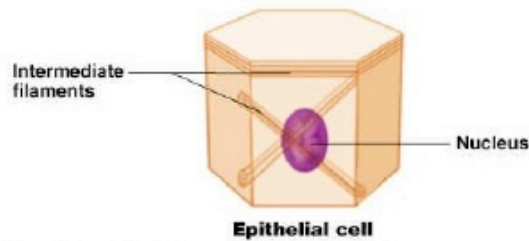


Figure 3.7; 1, 2

Copyright © 2003 Pearson Education, Inc. publishing as Benjamin Cummings

Slide 3.19a

Cell Diversity

③ Cells that move organs and body parts

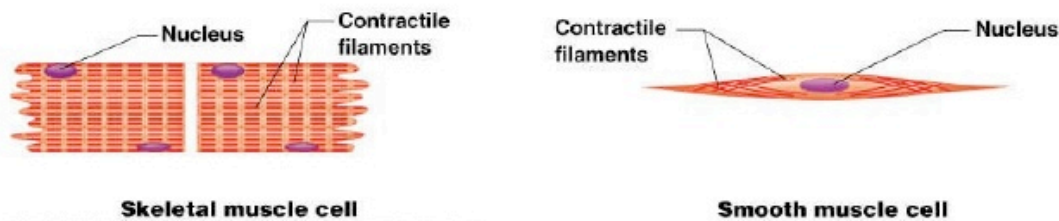


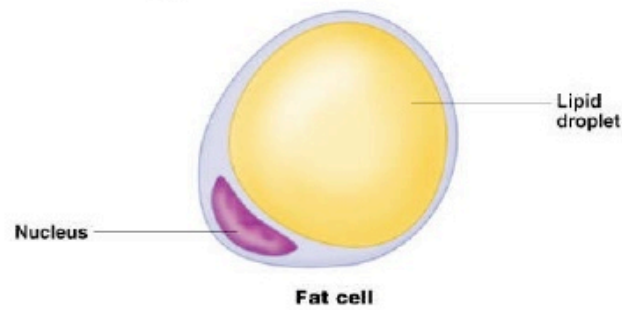
Figure 3.7; 3

Copyright © 2003 Pearson Education, Inc. publishing as Benjamin Cummings

Slide 3.19b

Cell Diversity

④ Cell that stores nutrients



⑤ Cell that fights disease

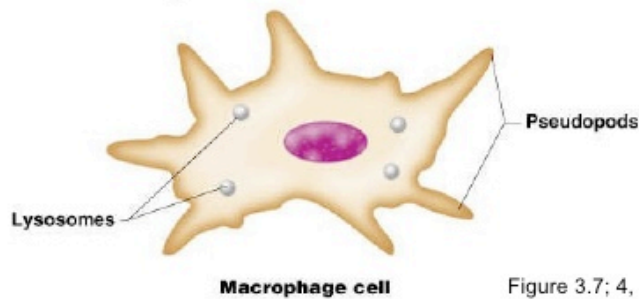


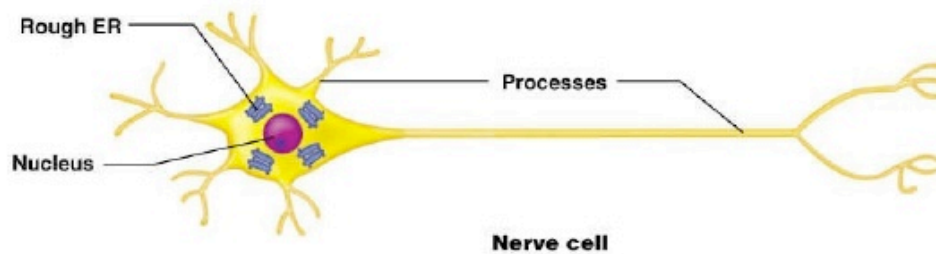
Figure 3.7; 4, 5

Copyright © 2003 Pearson Education, Inc. publishing as Benjamin Cummings

Slide 3.19c

Cell Diversity

⑥ Cell that gathers information and controls body functions



⑦ Cells of reproduction

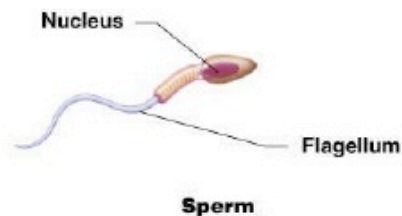
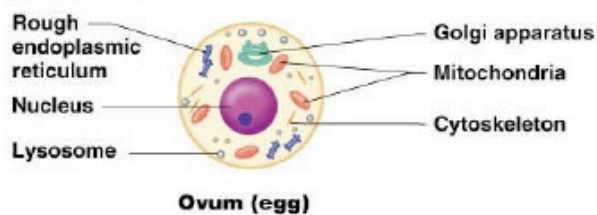


Figure 3.7; 6, 7

Copyright © 2003 Pearson Education, Inc. publishing as Benjamin Cummings

Slide 3.19d

